

Point Source Systems

GAE System 6CX-AL

Coaxial 2-Way Loudspeaker In Aluminium Housing

GAE
EFFICIENCY FOR SOUND

Key Features

Small format high fidelity passive loudspeaker system for music and speech reproduction in a flame proof housing. The square design incorporates a coaxial high power two-way transducer in a vented cabinet made from welded aluminium panel sheets. The loudspeaker and its mounting accessories allow subsequent mounting in the cut-outs of suspended ceilings.



System 6CX-AL

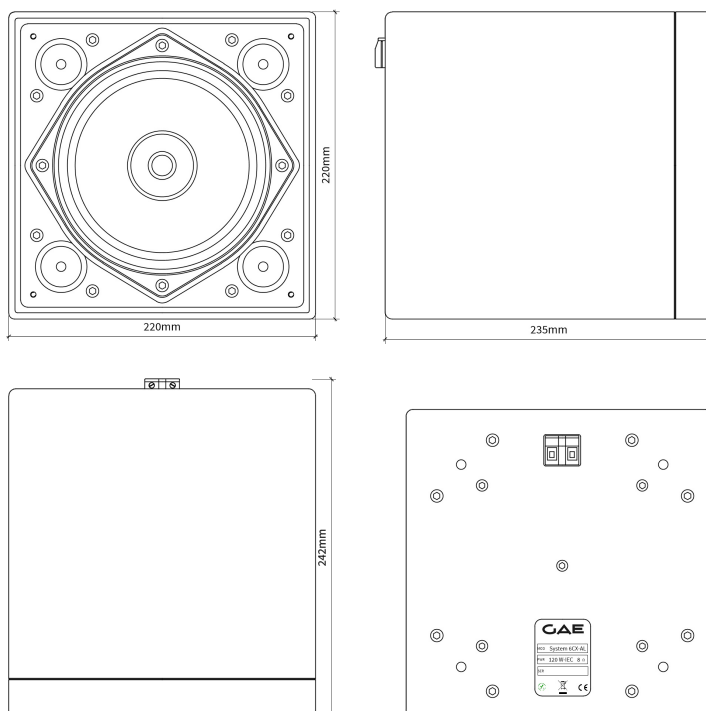
General:

The System 6CX-AL is a passive high power background / foreground loudspeaker system with a radial dispersion of 90°. The smooth frequency and phase response in line with the even acoustical dispersion allows microphone operation in close distance.

With its high sensitivity of 91dB SPL/1m for 1W the System 6CX produces an impressive 115dB RMS/1m with 200W. The acoustical bandwidth is 85Hz - 19KHz (+/- 2,5dB with controller) and a minimum phase response within +/-45°.

A two Connector version for 2,5mm² cables are available, a screw terminal or a metric "PG" screwed cable gland.

The mechanical design allows the installation through suspended ceilings with a minimum of clearance by the use of the GAE BG-34 suspension. This suspension can be mounted in an early stage to the bare ceiling whilst the loudspeaker can be mounted via its cabinet vents to the BG-34 after the suspended ceiling is finished.



System 6CX-AL physical dimensions

Architectural:

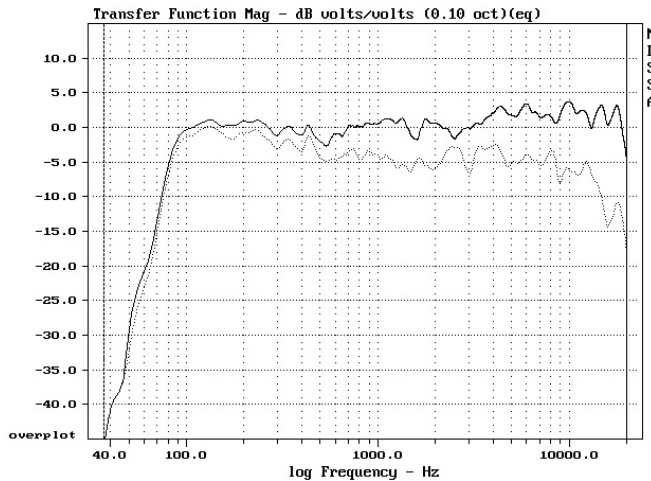
The System 6CX-AL is a compact system in a square design. It is remarkably accepted in sophisticated installations needing a high fidelity and high power playback system with smart mounting solutions. The system incorporates an exceptionally reliable Coaxial transducer with neodymium magnets and efficient voice coil cooling. The musical quality can easily be underlined with a matching sub-/low woofer system as the GAE BR12N extending the performance down to 40Hz.

The speakers housing dimensions are only 220x220x242mm (HxWxD). Different colour options for varnish, powder- or anodized surface coatings are available to match interior design. A special designed protective front grill with a highly permeable acoustic foam cover is recessed into the baffle design.

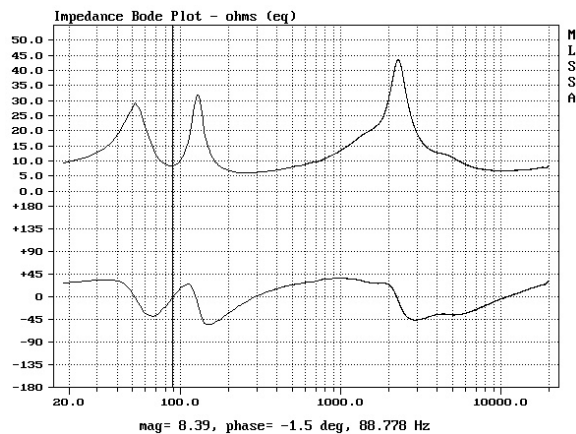
Connectivity is provided by screw terminal or a flame proof screwed cable gland. Different specialised mounting fixtures are available or can be factory supplied to customer specification.

Applications:

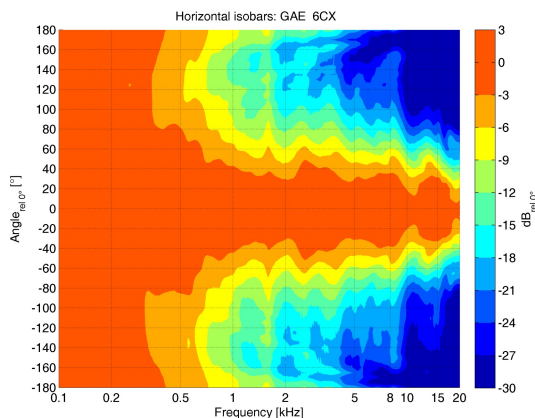
Background- / foreground loudspeaker for voice and music reproduction * High quality playback systems for lobbies and bars * Exhibition Audio for background sound systems * Applicable where fire proof requirements are to be fulfilled *



System 6CX-AL: On and Off Axis Frequency Response



System 6CX-AL: Impedance and Phase Response



System 6CX-AL: Factory Setup: Isobars vs Frequency

Engineering:

Design: 2-Way passive Coaxial loudspeaker in a vented cabinet design

Frequency Response -3dB: (+/- 2,5dB): 85Hz - 19KHz in Fullrange Setup

Frequency Response -10dB: (+/- 2,5dB): 75Hz - 19KHz in Fullrange Setup

Dispersion: 90° radial

Phase Response (+/-45°): 85Hz - 19KHz

Impedance Response: 8Ohm, Minimum of 6,1Ohm@255Hz

Power Handling Capacity: 120W RMS (IEC 268-5) = 32dBu, 240W Program = 35dBu

Sensitivity (2,83V/80hm/1m): 91dB/SPL

Program SPL: > 115dB @200W/1m¹

Components: 1x6,5-inch cone transducer with neodymium magnet and coated cone with 1,5-inch voice coil and coaxial mounted HF-driver with 1-inch voice coil

Mounting: 4 x 6,5mm mounting holes in backwall

Housing: 8mm welded aluminium panel sheets and 30mm aluminium baffle HxBxD): 220x220x242mm

Weight: 10,5kg

Options: RAL colours for varnish, powder- or anodized coating. Standard Colour is RAL 9005 (black)

Optional attachments: extended wall-/Ceiling mounting yoke, BG-34 mounting yoke and customer specified mounting hardware.

Related Products: GAE BR 12N sub/low woofer system. System 6CX-i, System 6CX-m wooden housing versions, System 6CX-RA Tubular cabinet design

Compliant to: CE, ROHS, Reach

¹ ≤ 10% THD

Dedicated Mounting Accessories:

GAE supplies standard mounts as shown here. Any special accessories can be designed and manufactured for your project.



GAE BG-34 Mount including DR-34 mount extension for installation through suspended ceilings



GAE UB6CX Mount including DR-34 mount extension for visible installations



GAE DR34, intentionally for installations with fixed height and tilt